



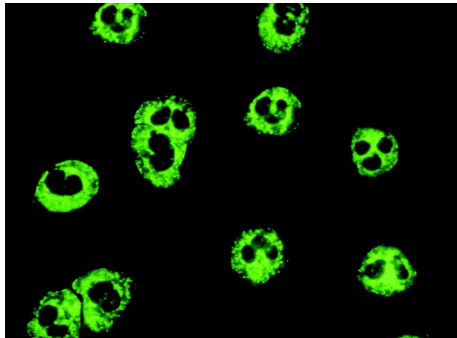
IFA c-ANCA, p-ANCA

ANCA are present in a variety of vasculitic diseases:

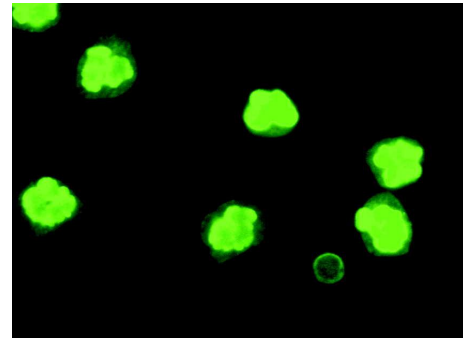
cANCA is associated with a high sensitivity and specificity for Wegener'sche granulomatosis (prevalence 80-95 %), the titre correlates with the course of the disease. In some cases cANCA is detectable at Microscopic Arteritis and Polyarteritis nodosa. The major cANCA target antigen is Proteinase 3.

pANCA is associated with a high sensitivity and specificity for Mikroskopische polyangiitis und Churg-Strauss syndrome. The major pANCA target antigen is thought to be Myeloperoxidase (MPO).

80% of all patients with a positive pANCA titre show a histological manifested Vasculitis, Colitis Ulcerosa (CU) or PSC.



cANCA ethanol-fixed



pANCA ethanol-fixed

- IFA c-ANCA, p-ANCA -IgG Art. No. IF 190 48 tests (4x12) |
- IFA c-ANCA, p-ANCA -IgG Art. No. IF 191 96 tests (8x12) |
 - IFA p-ANCA -IgG Art. No. IF 192 48 tests (8x6) |
 - IFA p-ANCA -IgG Art. No. IF 194 96 tests (16x6) |
 - IFA c-ANCA -IgG Art. No. IF 193 48 tests (8x6) |

Intended use

The IFA test c-ANCA, p-ANCA is a Immunofluorescence Assay for the semiquantitative determination of IgG-specific anti-neutrophil cytoplasmic antibodies in human serum and plasma

- Screening titre 1:20 Conjugate class anti-human IgG - FITC labeled

Antigen characterisation

Antigen substrate: neutrophil granulocytes

Advantages

- Standardized test format
- Ready to use reagents
- Teflon mask slides ensure easy handling during test procedure
- Individually sealed and vacuum packed single slides for a long shelf-life
- **6 wells ethanol-/ 6 wells formalin-fixed for ANCA differentiation or**
- **Separate 6 wells ethanol- fixed (MPO) (IF 192 / IF 194) , 6 wells formalin-fixed (PR3) (IF 193)**

Fluorescence pattern

A sample is considered negative (titre < 1:20) if no specific neutrophil staining is observed. Positive results should be interpreted regarding the titre and the specific fluorescence pattern of cANCA and pANCA..

ANCA differentiation

| Type of antibodies | Fluorescence pattern on ethanol-fixed wells | Fluorescence pattern on formalin-fixed wells |
|---|--|--|
| cANCA cytoplasmic or "classic" ANCA | Diffuse granular, in part central accentuated cytoplasmic fluorescence, negative staining of nucleus | Diffuse granular, in part central accentuated cytoplasmic fluorescence, negative staining of nucleus |
| pANCA perinuclear ANCA | Predominately perinuclear fluorescence, negative staining of Cytoplasm | Diffuse granular, in part central accentuated cytoplasmic fluorescence, negative staining of nucleus |
| atypical ANCA Mixtype ANCA/ ANA | Cytoplasmic and perinuclear, nuclear fluorescence | Cytoplasmic and perinuclear, nuclear fluorescence |
| ANA Antinuclear antibodies | Nuclear fluorescence, negative staining of Cytoplasm | Nuclear fluorescence, negative staining of Cytoplasm |

ANA reactions may sometimes be confused with or mimic pANCA staining, it is recommended to differentiate these samples on formalin-fixed slides.