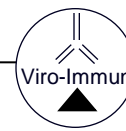




Corporate profile

VIRO-IMMUN Labor-Diagnostika GmbH

2011





VIRO-IMMUN at a glance

- **Founded in 1985, domiciled in Oberursel close to Frankfurt/Germany**
- **first producer of immunofluorescence assays (IFA) in Germany**
- **Gradual extension of technology portfolio**
 - **ELISA: 1987**
 - **Western Blot: 1996**
- **Gradual extension of product portfolio**
 - **1988/89: ToRCH**
 - **2002: μ -captures**
 - **today: 25 ELISA parameters**
- **CE-certification in 2003, dto. ISO 9001:2008 and EN ISO 13485:2003/AC:2009**
- **Product focus:**
 - **broad coverage of the most common non blood-bank pathogens in infectious diseases**
 - **specialties for the diagnostics of autoimmune diseases**
- **Core technologies: ELISAs (2/3 of sales; ToRCH as most important ELISAs), IFAs and Western Blots (1/3 of sales)**
- **Highly qualified employees (chemists, biologists, MTAs)**



The product range, fully CE-marked

ELISA

Infectious diseases

	IgG	IgM	IgA
Adeno virus	.	.	.
Borrelia burgdorferi (Lyme)	.	.	.
Candida	.	.	.
Chlamydia trachomatis	.	.	.
Chlamydia pneumoniae	.	.	.
Cytomegalo virus (+IgG avidity test)	.	.	.
Epstein-Barr virus	.	.	.
TBE virus	.	.	.
Helicobacter pylori	.	.	.
Herpes simplex virus Type 1/2	.	.	.
HSV screening	.	.	.
Influenza A / B virus	.	.	.
Measles virus	.	.	.
Mumps virus	.	.	.
Mycoplasma pneumoniae	.	.	.
Parainfluenza 1/2/3 screening	.	.	.
Respiratory syncytial virus	.	.	.
Rubella virus	.	µ	.
Toxoplasma gondii (+IgG avidity)	.	µ	.
Varicella zoster virus	.	.	.
RF (rheumatoid factor) sorbent	.	.	.

Western Blot

Infectious diseases

	IgG	IgM	IgA
Borrelia burgdorferi (Lyme)	.	.	.
Helicobacter pylori	.	.	.

IFA

Autoimmunology & Infectious diseases

Autoimmunology

Cells (IgG)

ANA-HEp-2 (Anti-nuclear antibody)
nDNA antibody (*Chirithidia luciliae*)
c-ANCA/p-ANCA (anti-neutroph. cytopl. antib.)

Single rat/rabbit tissue (kidney; liver; heart; stomach; muscle; tongue; IgG or polyvalent)

AMA (Anti-mitochondrial antibody)
ANA (Anti-nuclear antibody)
ASA (Anti-skin antibody)
ASMA (Anti-smooth muscle antibody)
HMA (Anti-heart muscle antibody)
SKL (Anti-skeleton muscle antibody)

Double tissue (Rat stomach/kidney, polyv.)

AMA/ASMA/APCA (Anti-mitochondrial/-smooth muscle/-parietal cell antibodies)

Triple tissue (Rat stomach/kidney/liver polyv.)

ANA/AMA/ASMA/APCA (Anti-nuclear/mitochondr./-smooth muscle/-pariet. cell antibodies)

LKM (Anti-liver kidney microsomal antibody)

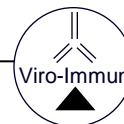
Autoimmunology

Single monkey tissue (adrenal gland; kidney; oesophagus; pankreas; thyroid; IgG, IgA or polyvalent)

ASA (Anti-skin antibody)
ATA (Anti-thyreoidal antibody)
EmA (Anti-endomysium IgA antibody)
ICA (Anti-islet cell antibody)
GBM (Anti-glomerulus basement membr. antibody)
NNA (Anti-adrenal gland antibody)

Infectious diseases

	IgG	IgM	IgA
Borrelia (Lyme)	.	.	.
Candida	.	.	.
Chlamydia tracho.	.	.	.
Cytomegalo virus	.	.	.
Epstein-Barr virus	.	.	.
HSV type 1/2	.	.	.
Measles virus	.	.	.
Mumps virus	.	.	.
RSV virus	.	.	.
Toxoplasma gondii	.	.	scr.
Trep. Pall. (FTA Abs)	.	.	.
Varicella zoster virus	.	.	.



Superior ELISAs due to... (I)

Identical test protocol for nearly all VIR-ELISAs

- **same dilution for all samples**
all samples are diluted 1:100
- **same short incubation times (except Toxo/Rubella IgM/Chlamydia pn.)**
incubation times: 30min sample / 30min conjugate / 10min substrate; short incubation times mean fast test results
- **same incubation conditions (except Toxo/Rubella IgM/Chlamydia pn.)**
incubations at room temp. (no heating incubator required)
- **same test handling**
all the same: wash procedure, wash/stop solution and substrate
- **small amount of patient samples needed**
numerous tests can be executed with one sample

Easy handling

- **ready to use reagents**
no reagent dilution, no reagent preparation
(except of washing solution and Toxo antigen/POD conjugate)
- **standardized test protocol**
simultaneous testing of different parameters easily possible
- **micro strips individually sealed and vacuum packed**
economical (no waste) due to single packaging and breakaway wells; longer stability / no antigen deterioration by humidity
- **colour coated ELISA strips**
parameter specific colour codes enhance user friendliness



Superior ELISAs due to... (II)



Easy evaluations of results

- **cut off control included in kit**
easy differentiation of positive and negative samples
- **positive control included in kit**
easy quantification (titre) by a defined positive control
- **calibrators** for C. Trachomatis-IgG, C. Pneumoniae-IgG, Measles-IgG, Rubella-IgG, TBE-IgG, Toxo-IgG; quantification (titre or I.U./International Units based on WHO Standards) by defined calibrators, **included in kit.**
- **External control samples** on request, for internal quality control.

Open test system

- **manual and automatic testing possible**
open to all auxiliary equipment (reader, washer etc.) for a high customer flexibility
- **automatisation for all steps**
VIR-ELISA can be automated from sample preparation to result calculation
- **assembling of test kits (size, contents, number/ volume of reagents, bulk etc.) in accordance to customer's equipment and process requirements:** maximum customer orientation, sample throughput and system efficiency



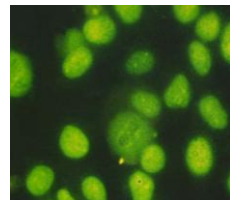
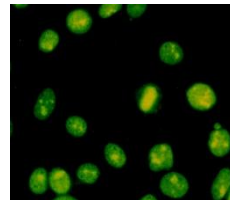
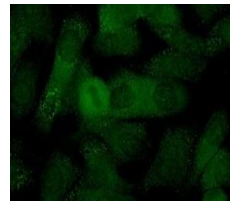
Superior IFAs due to...

Easy handling

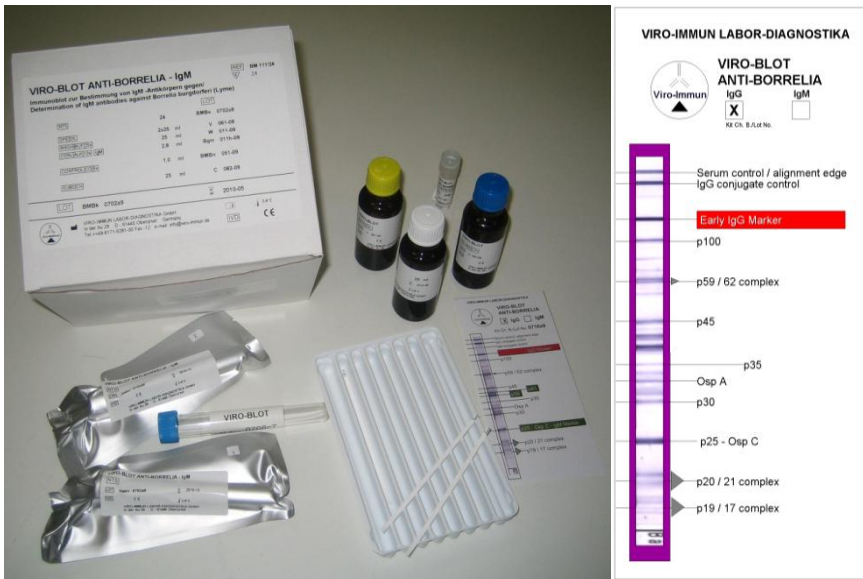
- **ready to use reagents**
no reagent dilution, no reagent preparation (except washing solution)
- **simple assay procedure**
identical incubation times for all IgG and IgA assays allow testing of several infectious disease parameters at the same time; identical incubation times for all IgM assays
- **fast test results**
short incubation times mean fast availability of results
- **teflon mask slides**
ensure easy handling during test procedure
- **long stability of 49 months**
by using individually sealed & vacuum packed slides; storage in refrigerator (2-8°C)

Easy evaluation of results

- **controls included in kit**
clear evaluation of results by easy comparison of sample with controls
- **defined positive controls included**
controls are clearly defined (IFA titer)



Superior Western Blots due to...



- **sonicate antigen extract**
means high sensitivity already at early phase infections
- **ready to use reagents**
no reagent dilution or preparation necessary
- **vacuum sealed strips**
long stability (18 months), storage in refrigerator (2-8°C)
- **fast test results**
short incubation times mean fast availability of results
- **control included in kit**
clear evaluation of results by easy comparison of sample with controls
- **easy evaluation of results (I)**
specific antigen bands are clearly separated from unspecific bands
- **easy evaluation of results (II)**
positive control strip (developed) as kit-specific template included
- **easy evaluation of results (III)**
clear, simple and variable system for evaluation of results by a specific interpretation template in each kit
- **VIRO-BLOTriX Software** for the automatic analysis and interpretation of VIRO-BLOT strips; a fully integrated system working on standard PC hardware
>> **scan >> analyse >> archive : easy, safe and fast evaluation of the test strips**



Contact details

VIRO-IMMUN Labor-Diagnostika GmbH

In der Au 29

61440 Oberursel / Germany

+49 (0) 6171 – 6281 – 00 (Tel.)

+49 (0) 6171 – 6281 – 12 (Fax)

info@viro-immun.de

www.viro-immun.de

